

Product guide

Step by Step



How to use Weathering Effects

Art. 73.803

Industrial Splash Mud

The color of grayish mud, native to urban environment where the presence of human activity, industrial construction and decay, has caused this particular shade of sludge. If you are looking for the kind of grayish splashed mud so typical in industrial areas, this Vallejo reference offers an easy way to achieve this project. As shown on the example below, we have applied Industrial Splash Mud over the darkest shade of the camouflage.

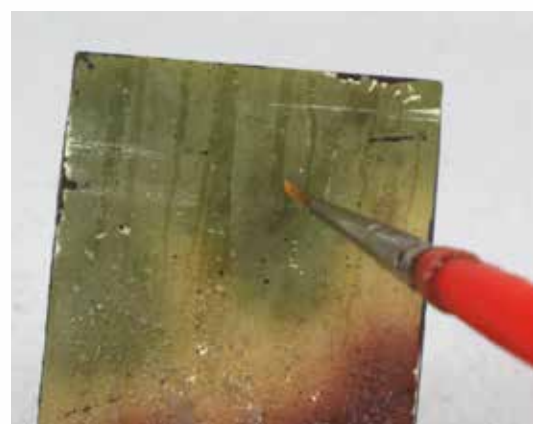
by Michel Pérez



- 1 When you take the product from the jar with a brush, you can see the density of the formulation. Splash Mud has a viscous consistency. If you want less density, you can thin it down with water.



- 2 The splash effect is very easy to achieve by just rubbing the brush with a stick or flicking it with any other hard object.



- 3 This is a water-based product and can be easily diluted further with water. With a light thinning we can achieve very realistic traces of the various kinds of streaking caused by humidity.



- 4 The final result shows the difference in texture and shine, in both cases with a very realistic look.